

SYNCHRONIZED TELESCOPIC JACK - 4 STAGES



CUSTOMER'S INFORMATION:

COMPANY NAME : _____

TEL : _____

DATE : _____

EMAIL : _____

PROJECT/REFERENCE : _____

JACK DATA :

Capacity (Pound) : _____ Car Weight (Pound) : _____

Speed (Ft/Min) : _____ Travel (In) : _____

Twin Single New
 Vic NPT Male NPT Female

Existing :

Ø PISTON (A) _____

Rupture Valve : Yes No

Ø CASING (E) _____

NPT VIC

Ø OIL INLET _____

Support plate : Square Plate Round Plate

Alignment Pin

Follower Guides

POWER UNIT DATA :

TYPE : DRY SUBMERSIBLE

START : 80 120

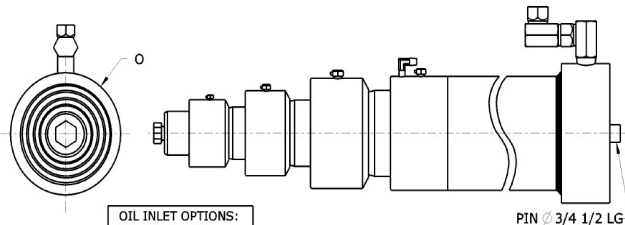
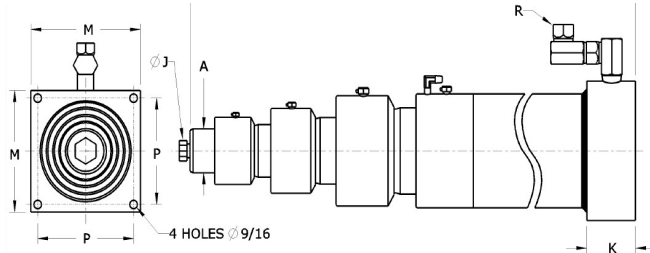
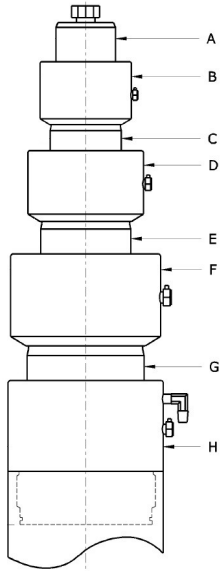
MOTOR VOLTAGE : 220/1/60 208/3/60 230/3/60
 460/3/60 575/3/60 OTHER : _____

OPTIONAL ACCESSORIES DESIRED :

Ball valve
 Thermal block
 Pressure negative switch
 Insulating coupling
 Line strainer

Oil heater
 Oil cooler
 Thermistor
 Drip pan
 Scavenger pump
 Temperature regulator
 Controller mount
 Anti-vibration pad

OTHER : _____



OIL INLET OPTIONS:
 ■ NPT Male
 ■ NPT Female
 ■ VIC

A	B	C	D	E	F	G	H	J	K	L	M	O	P	R
Ø PISTON	Ø HEAD	Ø PISTON	Ø HEAD	Ø PISTON	Ø HEAD	Ø PISTON	Ø CASING	Ø BOLT	BASED THICKNESS	DEAD LENGTH (IN)	SQUARE BASE	Ø ROUND BASE	HOLE DISTANCE	Ø OIL INLET
1 1/2	3	2	4	3	5 1/2	4 1/2	6 1/2	1/2 NC	2	31	8X8	7 1/2	7	3/4 NPT
1 3/4	4	2 3/4	5	3 3/4	6 1/2	5 1/2	8	3/4 NC	2	33	9X9	9	8	3/4 NPT
2	4	2 7/8	5	4 1/4	7 1/2	6 1/2	9 1/4	3/4 NC	2	36	10X10	10	9	3/4 NPT
2 SP	4 1/2	2 1/2	5 1/2	4 1/2	7 1/2	6 1/2	10	3/4 NC	3	36	11X11	11	10	3/4 NPT
2 1/2	5	3 3/4	6	5	7 3/8	7 1/2	11	1 NC	3	39	13X13	12	12	2 VIC
3	5	4	6 1/2	5 1/2	8	8	12	1 NC	3	40	13X13	13	12	2 VIC
3 1/2	6	4 7/8	7 3/4	6 3/4	10	10	14	1 1/4 NC	4	41	16X16	16	15	2 1/2 VIC
4 1/2	7 1/2	6	9 1/2	8	12	11 3/4	17	1 1/4 NC	4	42	18X18	18	15	2 1/2 VIC

STANDARD BOT AND TOT	0/25 FEET/MINS		26/50 FEET/MINS		51/75 FEET/MINS		76/100 FEET/MINS		101/125 FEET/MINS		126/150 FEET/MINS		151/200 FEET/MINS	
	BOT	TOT	BOT	TOT	BOT	TOT	BOT	TOT	BOT	TOT	BOT	TOT	BOT	TOT
TELESCOPIC 4 STAGES														
RECOMMENDED VALUE	6"	12"	8	12"	10"	16"	10"	16"	10"	16"	10"	18"	12"	24"
MINIMUM VALUE	4"	8"	4"	8"	6"	10"	8"	12"	8"	12"	8"	12"	10"	16"

IMPORTANT :

BOT : _____ TOT : _____

NOTES